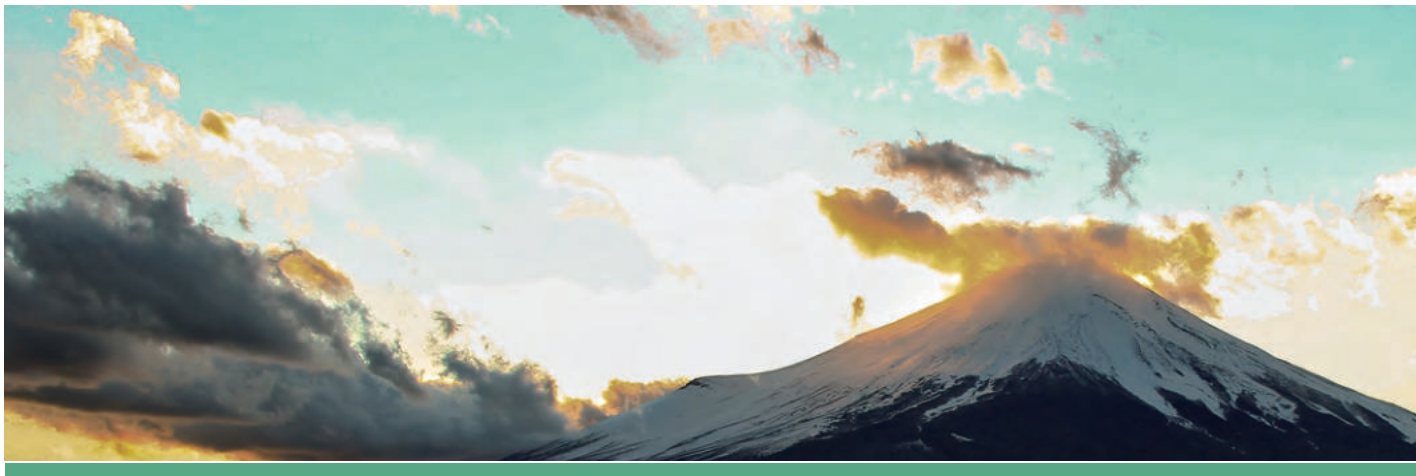


**AIRMAN**®

🇯🇵 JAPANESE QUALITY SINCE 1938

# Mini-excavator AX19-7

🇪🇺 Compliant with the EU Stage V-emission regulations



**HOKUETSU INDUSTRIES EUROPE B.V.**

# Mini-excavator AX19 -7



**High performance**

Overall height  
**2380 mm**



Rear-end swing radius  
**1140 mm**

Dumping height  
**2380 mm**

Cutting height  
**3430 mm**

Digging reach  
**3900 mm**

Digging depth  
**2380 mm**

**Easy to maintain**

## Neutral Engine Start System

The engine cannot be started unless the shut-off lever is in the lock position for safe operation.

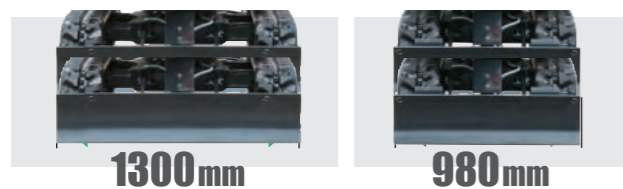


## Hydraulic Pilot Control

Hydraulic pilot control levers provide light, smooth control of the front, blade, swing and travel. The levers are ergonomically arranged for easier and less tiring operation.

## Adjustable Crawlers and Blade

Tracks can be extended and retracted by control lever: retracted for truck transport and easy access to narrow job sites; and extended for surefooted excavation.



## Easy to transport by trailer due to its compact dimensions and low weight



## Vertically Sliding Engine Cover

The upright engine cover, upgraded from the conventional model, slides vertically with less rearward projection for ease of maintenance in confined spaces.



## Enlarged Fuel inlet

Large fuel port has been fitted as per larger Airman models for quick filling.



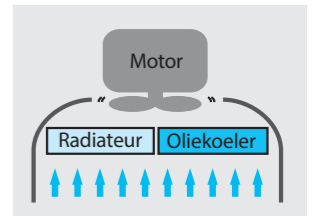
## Easy Access for Engine Maintenance

With the seat tilted up, the top of engine is exposed for easy maintenance.



## Easy to clean Radiator

The radiator and oil cooler are arranged side by side for easy cleaning. Ventilation ports on the radiator cover are enlarged for more efficient cooling.



- 01: Boom cylinder fitted on top of the boom cylinder to avoid damage.
- 02: Extra hydraulic piping on the arm can be operated by a proportional working thumbroller on the right hand joystick.
- 03: Easy to open covers give good access for quick maintenance.
- 04: Largest cabin in its class with good allround visibility.
- 05: The tracks can be extended or retracted from 980 to 1280 mm.
- 06: standard equipped with : 2 mirrors, 3 working lights and a radio.



# SPECIFICATIONS AX19-7

## ENGINE

Model	3TNV70
Type	Water-cooled, 4-cycle, swirl combustion chamber injection type diesel engine
No. of cylinders	3
Rated power	
ISO 14396, netto	11.5 kW op 2 400 min <sup>-1</sup>
ISO 9249, netto	10.6 kW op 2 400 min <sup>-1</sup>
SAE J1349, netto	10.6 kW op 2 400 min <sup>-1</sup>
Maximum torque	48.8 Nm op 1 800 min <sup>-1</sup>
Piston displacement	0.854 L
Bore and stroke	70 mm x 74 mm
Battery	1 x 12 V / 36 Ah

## HYDRAULIC SYSTEM

<b>Hydraulic pumps</b>	
Main pumps	2 variable displacement axial piston pumps t 1 gear pump
Maximum oil flow	2 x 19.2 L/min 1 x 10.8 L/min
Pilot pump	1 tandwielpomp
Maximum oil flow	6.5 L/min
<b>Hydraulic motors</b>	
Travel	2 variable displacement axial piston motors
Swing	1 gear motor
<b>Relief valve settings</b>	
Implement circuit	20.6 MPa (210 kgf/cm <sup>2</sup> )
Swing circuit	13.7 MPa (140 kgf/cm <sup>2</sup> )
Travel circuit	20.6 MPa (210 kgf/cm <sup>2</sup> )
PT circuit	3.9 MPa (40 kgf/cm <sup>2</sup> )

## Hydraulic cilinders

	Quantity	Bore	Rod diameter	Stroke
Boom	1	65 mm	35 mm	490 mm
Arm	1	60mm	35(30)mm	368 mm
Bucket	1	55 mm	30 mm	311 mm
Blade	1	70 mm	40 mm	94 mm
Boom swing	1	60 mm	30 mm	298 mm
Span	1	50 mm	30 mm	312 mm

## UPPERSTRUCTURE

### Swing device

Swing circle is single-row. Swing parking brake is spring-set / hydraulic released disc type.

Swing speed ..... 9.4 min<sup>-1</sup>

Swing torque ..... 1.4 kNm

## BUCKET AND ARM DIGGING FORCE

	Arm length	1.08 m
Bucket digging force ISO		16.0 kN (1 632 kgf)
Bucket digging force SAE : PCSA		12.6k N (1 285kgf)
Arm crowd force ISO		8,4 kN (855 kgf)
Arm crowd force SAE : PCSA		7,8kN (794 kgf)

## UNDERCARRIAGE

### Rubber tracks

Tractor-type undercarriage. Welded track frame using selected materials. n. Side frame extended by cylinder span..

### Number of rollers on each side

Lower rollers ..... 3

### Travel Device

Each track is driven by a 2-speed axial piston motor.

Parking brake is of the spring-set/hydraulic-released disc type.

Travel speeds ..... High : 0 tot 4.2 km/h

Low : 0 tot 2.4 km/h

Maximum traction force ..... 11.4 kN (1 160 kgf)

Gradeability ..... 47% (25 degrees) continuous

## SERVICE REFILL CAPACITIES

Fuel tank	22.0 L
Engine coolant	3,5 L
Engine oil	3,1 L
Travel motor (each side)	0.25 L
Hydraulic system	26.0 L
Hydraulics oli tank	14.0 L

## WEIGHTS AND GROUND PRESSURE

### Operating weight and Ground Pressure

Including boom of 1.700 m and 0.044 m bucket (ISO volgeladen).

Type of shoes	Shoe width	Arm length	kg	kPa(kgf/cm <sup>2</sup> )
Rubber shoes	230 mm	1.08 m	1 920	30.6(0.31)

\* Operating weight with fully serviced, + 75 kg operator , ISO 6016.

## SOUND LEVEL

Sound level cabin according to ISO 6396 ..... LpA 78 dB(A)

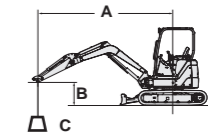
External soundlevel according to ISO 6395 en

EU-Directive 2000/14/EC..... LwA 93 dB(A)

# LIFTING CAPACITIES (Without bucket)

Remarks :

1. Ratings are based on ISO 10567.
2. Lifting capacity does not exceed 75% of tipping load with the machine on firm, level ground or 87% full hydraulic capacity.
3. The load point is the center-line of the bucket pivot mounting pin on the arm.
4. \*Indicates load limited by hydraulic capacity.
5. 0 m = ground.



A: Load radius  
B: Load point height  
C: Lifting capacity

For lifting capacities, subtract bucket and quick hitch weight from lifting capacities without bucket.

Conditions	Load point height m	Load radius						At max. reach		
		1.0 m		2.0 m		3.0 m		meter		
		Rating over-front	Rating over-side or 360 degrees	Rating over-front	Rating over-side or 360 degrees	Rating over-front	Rating over-side or 360 degrees			
cabine, blade above ground										
Boom 1.70 m Arm 1.08 m	1.0			0.581	0.475	0.389	0.270	0.335	0.233	3.33
	0 (Ground)			0.440	0.300	0.378	0.259	0.333	0.230	3.29
Rubber shoes 230 mm	-1.0	*1.317	*1.079	0.354	0.278			0.355	0.278	2.83

Conditions	Load point height m	Load radius						At max. reach		
		1.0 m		2.0 m		3.0 m		meter		
		Rating over-front	Rating over-side or 360 degrees	Rating over-front	Rating over-side or 360 degrees	Rating over-front	Rating over-side or 360 degrees			
cabine, blade on the ground										
Boom 1.70 m Arm 1.08 m	1.0			0.581	0.475	0.419	0.270	0.335	0.233	3.33
	0 (Ground)			0.497	0.300	0.429	0.259	0.362	0.230	3.29
Rubber shoes 230 mm	-1.0	*1.317	*1.079	0.354	0.278			0.355	0.278	2.83

# EQUIPMENT

Standard and optional equipment may vary by country, so please consult your Hokuetsu-dealer for details.

● : Standard equipment

## ENGINE

Alternator 12V-40A	●
Cartridge-type engine oil filter	●
Fuel main filter	●
Radiator reserve tank	●
Water-separator for engine fuel	●

## HYDRAULIC SYSTEM

Full-flow filter	●
Hydraulic pilot type control levers	●
Pilot control shut-off lever with neutral engine start system	●
Pilot filter	●
Suction filter	●
Swing parking brake	●
Travel parking brake	●
Two speed travel system with auto kickdown function	●
Valve for extra piping	●
Auxiliary function lever (AFL)	●

## CAB

AM-/FM-radio	●
Anti-slip plate	●
Arm rests	●
Defroster	●
Cup holder	●
Elektric horn	●
Floor mat	●
Heater	●
12V-power outlet	●
Switch and wiring for beacon light	●
Cab complies with ROPS/OPG regulations	●
Seat belt	●
Rear view mirror (right, left side)	●
Suspension seat	●
Window washer	●
Wiper	●
Front window power-assisted with gas damper	●
Tool box	●
Travel pedal	●

## LIGHTS

2 working lights on the cab and 1 light on the boom	●
---	---

## UPPERSTRUCTURE

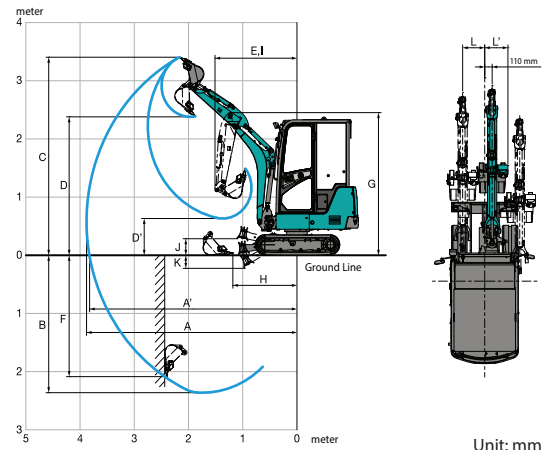
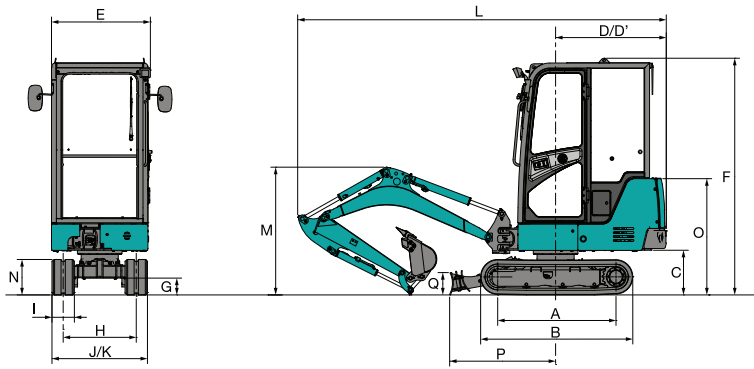
Battery 1 X 36 Ah	●
Battery disconnect swithc	●
Counter weight (cabine) 210 kg	●
Pilot accumulator	●

## ONDERWAGEN

Uitschuifbare onderwagen	●
Rubberen rupsschoen 300 mm	●

## HULPSTUKKEN

Graafarm 1.30 m	●
Giek 2.10 m	●
Extra leidingwerk	●
HN-bussen	●



This illustration shows with 1.08 m arm, 0.044 m<sup>3</sup> bucket and 230 mm rubber shoes.

DIMENSIONS	AX19-7	WORKING RANGES	AX19-7
A Distance between tumblers	1 210	A Max. digging reach	3 900
B Undercarriage length	1 570	A' Max. digging reach (on ground)	3 840
C Counterweight clearance	450	B Max. digging depth	2 380
D Rear-end swing radius	680	C Max. cutting height	3 430
D' Rear-end length	680	D Max. dumping height	2 380
E Overall width of upperstructure	990	D' Min. dumping height	680
F Overall height of cab	2 380	E Min. swing radius	1 540
G Min. ground clearance	165	F Max. vertical wall digging depth	2 090
H Track gauge (Retract / Extend)	750 / 1 050	G Front height at Min. swing radius	2 470
I Track shoe width	230	H Min. level crowding distance	1 160
J Undercarriage (Blade) width (Retract / Extend)	980 / 1 280	I Working radius at Min. swing radius (Max. boom-swing angle)	1 250
K Overall width (Retract / Extend)	990 / 1 280	J Blade bottom highest position above ground	230
L Overall length	3 500	K Blade bottom lowest position above ground	260
M Overall height of boom	1 210	L/L' Offset distance	330 / 520
N Track height	360	Max. boom-swing angle (deg.)	70 / 50
O Engine cover-height	1 150		
P Horizontal distance to blade	1 090		
Q Blade height	260		



**SAFETY**

- Operate safely in accordance with the proper operation manual.
- To prevent troubles and accidents, make sure to perform daily and preventive maintenance checks.

**AIRMAN**<sup>®</sup>  
**HOKUETSU INDUSTRIES EUROPE B.V.**

Aalsmeerderdijk 156, 1438 AX Oude Meer, Nederland  
 Tel : 31-20-6462636 Fax: 31-20-6462191  
 E-mail : info@hokuetsu.nl

DISTRIBUTOR :